



ON and AHEAD

LIGHTINGS AND ACCESSORIES

PRODUCT CATALOGUE

Bangladesh Lamps PLC.

Head Office: House 22, Road 04, Block F, Banani, Dhaka-1213
Manufacturing Plant: Ghashirdia, Shashpur, Shibpur, Narshingdi-1620



Website



/ Transtec Lighting & Accessories



www.transteclighting.com



ON and AHEAD



LED BRIGHT BULB



1 YEAR WARRANTY

The warranty period may vary in case of any changes to the specifications

AVAILABLE COLORS



Cool Day Light



Warm White






AVAILABLE BASE CAP



B22



E27

Technical Specification

Watt	3w	5w	7w	9w	13w	15w	18w
Lumen	300	500	700	900	1300	1500	1800
Model No	TRB 3W A55	TRB 5W A55	TRB 7W A60	TRB 9W A60	TRB 13W A60	TRB 15W A70	TRB 18W A80
Efficacy	≥100 lm/w						
Beam Angle	230°						
Operating Voltage	90-265V AC, 50/60Hz						
Power Factor	≥0.5						
Surge Protection	2.5KV						
Color Temperature	Cool Day Light 6500K & Warm White 2700K						
Color Rendering Index	≥80%						
Life Time	20000 hrs						
Lumen Maintenance	≥90% (2000 hrs)						

FEATURES

- ✔ Consistent CCT output
- ✔ Surge voltage protection
- ✔ Tested 2000 Hours
- ✔ No flickering, UV/IR & Mercury free
- ✔ Lumen maintenance after 2000 Hours>90%
- ✔ Good CRI Level

SPECIAL FEATURES

- ✔ Low Voltage Friendly
- ✔ AF Technology
- ✔ SV Protection

APPLICATIONS



LED BACKUP BULB



The warranty period may vary in case of any changes to the specifications

AVAILABLE COLORS



Energy Saver



Eco Friendly



Best Quality



Cost Efficient

LED BACKUP BULB

AVAILABLE BASE CAP



B22



E27

Technical Specification

Watt	5W	8W	10W	12W	15W	20W
Lumen	500	500	1000	1200	500	2000
Model No	TRBK 5W A67	TRBK 8W A67	TRBK 10W A80	TRBK 12W A67	TRBK 15W A95	TRBK 20W T100
Battery Capacity	1200 mAh	1800 mAh	1800 mAh	1800 mAh	1800 mAh	3600 mAh
Backup Duration	2 hours+					
Efficacy	≥100 lm/w					
Beam Angle	230°					
Operating Voltage	90-265V AC, 50/60Hz					
Surge Protection	2.5KV					
Color Temperature	Day Light 6500K					
Color Rendering Index	≥80%					
Life Time	35,000 hrs					
Lumen Maintenance	≥95% (2000 hrs)					

FEATURES

- Unique design
- Easy retrofit with existing B22/E27 holders.
- High capacity Li-Ion rechargeable battery built in.
- ≥2hrs Backup time, when electricity gone.
- Over charging & over discharge protection Built-in.
- Wide operating voltage range.
- Great lumen maintenance, >95% after continuous 2000hrs burning.
- Good CCT & CRI.
- Day Light & warm white options available.
- Non-dimmable.
- Warranty - 1 year.

APPLICATIONS



Home



Office



Outlet



Super Market



In All Indoor Area



Hotel & Restaurants

LED GREEN BULB

TRANSTEC
ON and AHEAD



2 YEARS WARRANTY

The warranty period may vary in case of any changes to the specifications

AVAILABLE COLORS

- Cool Day Light
- Warm White



LED GREEN BULB

AVAILABLE BASE CAP



Technical Specification

Watt	3W	5W	7W	9W	13W	15W	18W
Lumen	300	500	700	900	1300	1500	1800
Model No	TRG 3W A55	TRG 5W A55	TRG 7W A60	TRG 9W A60	TRG 13W A60	TRG 15W A70	TRG 18W A80
Efficacy	≥100 lm/w						
Beam Angle	230°						
Operating Voltage	90-265V AC, 50/60Hz						
Power Factor	≥0.9						
Surge Protection	2.5KV						
Color Temperature	Cool Day Light 6500K & Warm White 2700K						
Color Rendering Index	≥80%						
Life Time	25,000 hrs						
Lumen Maintenance	≥90% (2000 hrs)						

FEATURES

- Consistent CCT Output
- No flickering, UV/IR & Mercury free
- Tested 2000 Hours
- Surge voltage protection
- Good CRI Level
- 2 years warranty

APPLICATIONS



TRANSTEC
ON and AHEAD

LED BRIGHT POWER BULB

1
YEAR
WARRANTY

The warranty period may vary
in case of any changes
to the specifications

AVAILABLE COLORS



Cool Day Light



Warm White



Energy Saver



Eco Friendly



Best Quality



Cost Efficient

LED BRIGHT POWER BULB

AVAILABLE BASE CAP



B22



E27

Technical Specification

Watt	20W	30W	40W	50W
Lumen	2000	3000	4000	5000
Model No	TRB 20W T80	TRB 30W T100	TRB 40W T120	TRB 50W T140
Efficacy	≥100 lm/w			
Beam Angle	230°			
Operating Voltage	90-265V AC, 50/60Hz			
Power Factor	≥0.5			
Surge Protection	>2.5KV			
Color Temperature	Cool Day Light 6500K & Warm White 2700K			
Color Rendering Index	≥80%			
Life Time	25000 hrs			
Lumen Maintenance	>90% (2000 hrs)			

FEATURES

- ✔ Suitable for long run
- ✔ Consistent CCT Output
- ✔ No flickering, UV/IR & Mercury free
- ✔ Lumen Maintenance after 2000 Hours 90%
- ✔ Aluminum insulation body is provided for better heat reduction
- ✔ Good CRI Level
- ✔ Surge voltage protection
- ✔ Tested 2000 Hours
- ✔ 1 year Warranty

APPLICATIONS



Office



Outlet



Super Market



Industry



Street Market



Grocery

LED GREEN POWER BULB



The warranty period may vary
in case of any changes
to the specifications

AVAILABLE COLORS



Cool Day Light



Warm White



Energy Saver



Eco Friendly



Best Quality



Cost Efficient

LED GREEN POWER BULB

AVAILABLE BASE CAP



B22



E27

Technical Specification

Watt	20W	30W	40W	50W
Lumen	2000	3000	4000	5000
Model No	TRG 20W T80	TRG 30W T100	TRG 40W T120	TRG 50W T140
Efficacy	≥110 lm/w			
Beam Angle	230°			
Operating Voltage	90-265V AC, 50/60Hz			
Power Factor	≥0.9			
Surge Protection	2.5KV			
Color Temperature	Cool Day Light 6500K & Warm White 2700K			
Color Rendering Index	≥80%			
Life Time	25,000 hrs			
Lumen Maintenance	>90% (2000 hrs)			

FEATURES

- Die-Cast Aluminum body.
- Confirms high illuminance for long.
- Wide operating voltage range.
- PF > 0.95.
- Surge voltage protection up to 2.5KV.
- No flickering.
- UV/IR, mercury free.
- Great lumen maintenance, →90% after continuous 2000 hours burning.
- Good CCT & CRI.
- Average life 25,000 hrs.
- Better energy saving compared with other conventional lighting technologies.
- Easy retrofit with existing B22/E27 holders.

APPLICATIONS



Office



Outlet



Super Market



Industry

LED CANDLE BULB



1 YEAR WARRANTY

The warranty period may vary in case of any changes to the specifications

AVAILABLE COLORS

Cool Day Light

Warm White



Energy Saver



Eco Friendly



Best Quality



Cost Efficient

LED CANDLE BULB

AVAILABLE BASE CAP



B22



E27

Technical Specification

Watt	5W	12W	15W
Lumen	500	1200	1500
Model No	TRC 5W T36	TRC 12W T45	TRC 15W T50
Efficacy	≥100		
Beam Angle	230°		
Operating Voltage	90-265V AC, 50/60Hz		
Power Factor	≥0.5		
Surge Protection	2.5 KV		
Color Temperature	Cool Day Light 6500K & Warm White 2700K		
Color Rendering Index	≥80%		
Life Time	25,000 Hrs		
Lumen Maintenance	≥90% (2000 Hrs)		

FEATURES

- Classic and decent look.
- Wide operating voltage range.
- Surge voltage protection up to 2.5KV.
- No flickering.
- UV/IR, mercury free.
- Great lumen maintenance, →90% after continuous 2000 hours burning.
- Good CCT & CRI.
- Average life 25000 hrs.
- Better energy saving compared with other conventional lighting technologies.
- Cool Day Light 6500K & Warm White options available.
- Non-dimmable.
- Easy retrofit with existing B22/E27 holders.

APPLICATIONS



Home



Office



Outlet



Super Market



In All Indoor Area



Hotel & Restaurants

LED LUSTER BULB



AVAILABLE COLORS



Energy Saver



Eco Friendly



Best Quality



Cost Efficient

LED LUSTER BULB

AVAILABLE BASE CAP



B22



E27

Technical Specification

Watt	0.5W					
Model No	TR RP45	TR GP45	TR BP45	TR YP45	TR WP45	TR OP45
Color	Red	Green	Blue	White	Yellow	Orange
Size	P45					

FEATURES

- 95% energy Saving than GLS Luster
- Wide operating voltage: 50 V-240 V AC
- Size and shape like as GLS luster
- No mercury content, free from IR and UV radiation
- PC cover, fire retardant and breakage resistant
- Instant start, no flickering problem
- All products are in accordance with CE & ROHS standard

SPECIAL FEATURES

-  Transtec LED Luster does not break when dropped from the hand



Available Watt

25W 40W 60W 100W 200W



Eco Friendly



Best Quality



GLS BULB

AVAILABLE BASE CAP



B22



E27

Technical Specification

Watt	25W	40W	60W	100W	200W
Lumen	220	350	630	1150	2920
Size	E-50	E-50	E-50	A-55	E-75
Operating Voltage	220-240V AC				
Base Cap	B22/E27				

FEATURES

- Contains no mercury, so environment friendly
- Emits it's rated brightness immediately
- Fuse wire is used, for more safety
- Flicker Free and instant start

APPLICATIONS



Home



Shop



Firms



Washroom

LED BRIGHT T8 TUBE LIGHT



The warranty period may vary
in case of any changes
to the specifications

AVAILABLE COLORS



Cool Day Light



Warm White



Energy Saver



Eco Friendly



Best Quality



Cost Efficient

LED BRIGHT T8 TUBE LIGHT

AVAILABLE SIZE



2 Ft.



4 Ft.

Technical Specification

Watt	10W	20W
Lumen	1000	2000
Model No	TR10WT8GB	TR20WT8GB
Size	2 ft	4 ft
Efficacy	100 lm/w	
Beam Angle	230°	
Operating Voltage	100-265V AC, 50/60Hz	
Power Factor	≥0.5	
Surge Protection	Up to 2.5 KV	
Color Temperature	Cool Day Light 6500K & Warm White 2700K	
Color Rendering Index	≥80%	
Life Time	20000 hrs	
Lumen Maintenance	≥90% (2000 hrs)	

FEATURES

- Consistent CCT Output
- Good CRI Level
- Surge Voltage Protection up to 2.5 KV
- No flickering, UV/IR & Mercury free
- Lumen maintenance after 2000 Hours > 90%
- Tested 2000 Hours

APPLICATIONS



Home



Industry



Hospital



Outlet



Hotel &
Restaurants



Billboard

GREEN T8 TUBE LIGHT



Energy Saver



Eco Friendly



Best Quality



Cost Efficient

GREEN T8 TUBE LIGHT

AVAILABLE SIZE

2 Ft.

4 Ft.

Technical Specification

Watt	10W	20W
Lumen	1000	2000
Model No	TR10WT8G	TR20WT8G
Size	2 Ft	4 Ft
Efficacy	100 lm/w	
Beam Angle	230°	
Operating Voltage	100-265V AC, 50/60Hz	
Power Factor	≥0.90	
Surge Protection	>2.5 KV	
Color Temperature	Cool Day Light 6500K & Warm White 2700K	
Color Rendering Index	≥80%	
Life Time	20,000 hrs	
Lumen Maintenance	≥90% (2000 hr)	

FEATURES

- ❖ Glass Shell with G13 Pin Retrofit of fluorescent tube light.
- ❖ Light in weight, no need additional Ballast & Starter.
- ❖ Excellent luminous efficacy & extra bright light.
- ❖ Double life time compared with Fluorescent Tube Light (20,000 hours).
- ❖ Wide Input Voltage Range can do both pf > 0.90 & pf > 0.50.
- ❖ Built in surge protection save the light from high switching voltage.
- ❖ Easy maintenance.

APPLICATIONS



Office



Showroom



Shopping Mall

Low height
Warehouse

Class Room



Commercial Spaces



The warranty period may vary
in case of any changes
to the specifications

AVAILABLE COLORS

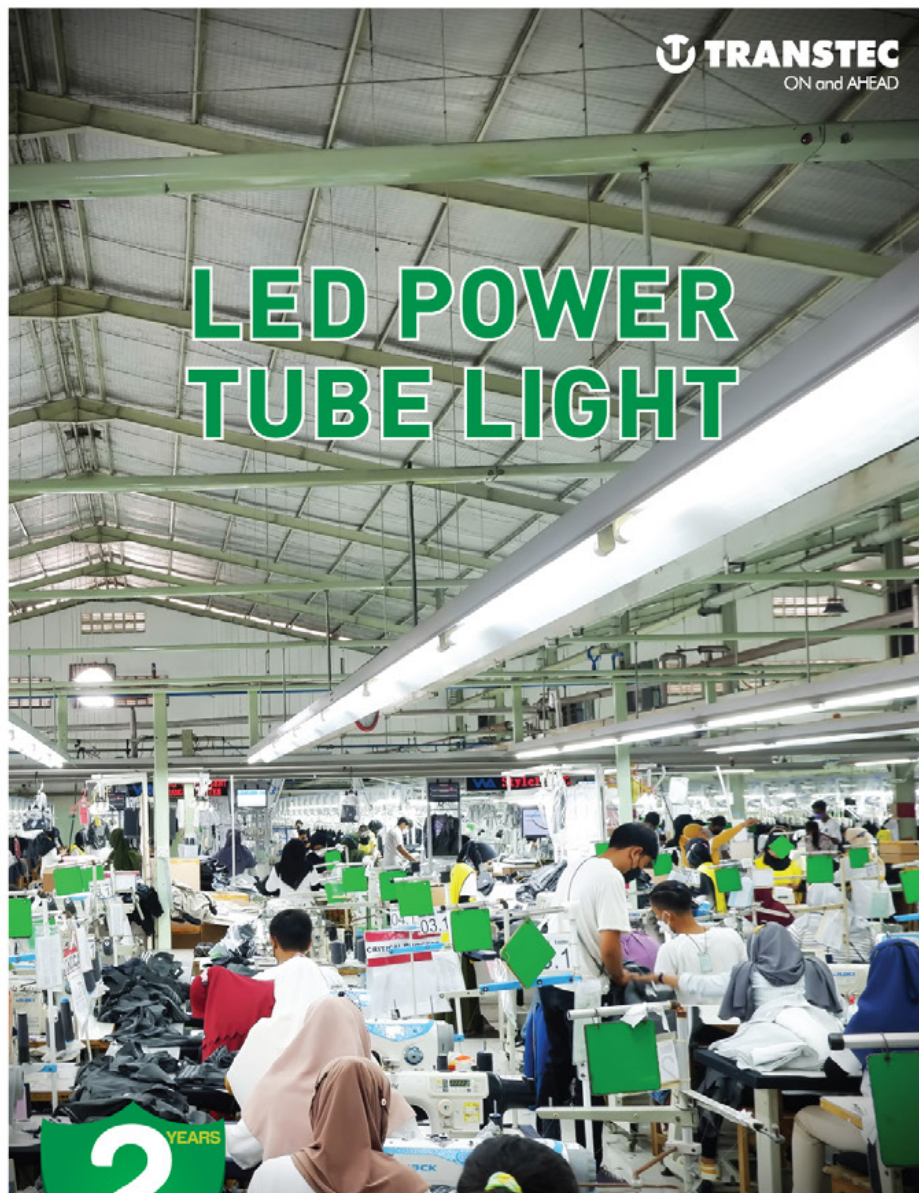


Cool Day Light



Warm White





LED POWER TUBE LIGHT

TRANSTEC
ON and AHEAD



The warranty period may vary
in case of any changes
to the specifications

AVAILABLE COLORS



Cool Day Light



Warm White



Energy Saver



Eco Friendly



Best Quality



Cost Efficient

LED POWER TUBE LIGHT

AVAILABLE SIZE



Technical Specification

Watt	10W	20W	22W
Lumen	1000	2200	2600
Model No	TR 10WT8AL	TR 20WT8AL	TR 22WT8AL
Efficacy	≥100 lm/w	≥120 lm/w	
Size	2 Ft	4 Ft	
Beam Angle	230°		
Operating Voltage	85-265V AC, 50/60Hz		
Power Factor	>0.95		
Surge Protection	>2.5KV		
Color Temperature	Cool Day Light 6500K & Warm White 2700K		
Color Rendering Index	≥80%		
Life Time	25,000 hrs		
Lumen Maintenance	>90% (2000 hrs)		

FEATURES

- Can be used 24/7
- Suitable for long run
- Consistent CCT Output
- No flickering, UV/IR & Mercury free
- Lumen maintenance after 2000 Hours >90%
- Aluminum insulation body is provided for better heat reduction
- Good CRI Level
- Surge Voltage Protection up to > 2.5 KV
- Tested 2000 hours

APPLICATIONS



Textile



Home



Office



Retail



Super Market



RMG



Commercial Spaces

LED GREEN T5 TUBE LIGHT



The warranty period may vary
in case of any changes
to the specifications

AVAILABLE COLORS



Cool Day Light



Warm White



Energy Saver



Eco Friendly



Best Quality



Cost Efficient

LED GREEN T5 TUBE LIGHT

AVAILABLE SIZE



1 Ft.



2 Ft.



4 Ft.

Technical Specification

Watt	4W	10W	20W
Lumen	400	1000	2000
Model No	TR 4WT5	TR 10WT5	TR 20WT5
Size	1 Ft	2 Ft	4 Ft
Efficacy	≥100 lm/w		
Beam Angle	230°		
Operating Voltage	100-265V AC, 50/60Hz		
Power Factor	≥0.5/≥0.9		
Surge Protection	>2.5KV		
Color Temperature	Cool Day Light 6500K & Warm White 2700K		
Color Rendering Index	≥80%		
Life Time	25,000 hrs		
Lumen Maintenance	>90% (2000 hr)		

FEATURES

- Easy installation, no need of any extra Batten
- Lasts more than 4 times than FTL
- 60% energy savings than fluorescent tube light
- No Additional Ballast and starter required
- Gives almost Same light after 1 year
- Can be used as linear light and mirror light (4W)
- Environment friendly: Mercury free, No UV/IR Radiations
- Glare & flicker Free
- Can connect 10 pcs in series

APPLICATIONS



Residence



Office



Showroom



Commercial Spaces

LED SLIM BATTEN TUBE LIGHT



Energy Saver



Eco Friendly



Best Quality



Cost Efficient

LED SLIM BATTEN TUBE LIGHT (OVAL)



OVAL

AVAILABLE SIZE

1 Ft. 2 Ft. 4 Ft.

SQUARE

AVAILABLE SIZE

2 Ft. 4 Ft.

LED SLIM BATTEN TUBE LIGHT (SQUARE)



Technical Specification

Watt	10W	20W	40W	20W	40W	60W
Lumen	1000	2000	4000	2000	4000	6000
Model No	TR 10W SBO	TR 20W SBO	TR 40W SBO	TR 20W SBS	TR 40W SBS	TR 60W SBS
Shape	Oval	Oval	Oval	Square	Square	Square
Size	1 Ft	2 Ft	4 Ft	2 Ft	4 Ft	4 Ft
Efficacy	≥100 lm/w			≥100 lm/w		
Beam Angle	230°			230°		
Operating Voltage	100-265V AC, 50/60Hz			100-265V AC, 50/60Hz		
Power Factor	≥0.5			≥0.5		
Surge Protection	2.5KV			2.5KV		
Color Temperature	Cool Day Light 6500K & Warm White 2700K			Cool Day Light 6500K & Warm White 2700K		
Color Rendering Index	≥80%			≥80%		
Life Time	25,000 hrs			25,000 hrs		
Lumen Maintenance	>90% (2000 hrs)			>90% (2000 hrs)		

FEATURES

- ✦ Slim & compact design.
- ✦ Wide operating voltage range.
- ✦ Both oval & square shape available.
- ✦ Uniform light distribution.
- ✦ Surge voltage protection ≥ 2.5KV
- ✦ No flickering, glare free.
- ✦ UV/IR, mercury free.
- ✦ Almost same lumen output even after using 1 year.
- ✦ Average life 25000 hours.
- ✦ Better energy saving compared to fluorescent Tube light.
- ✦ Cost effective operation.
- ✦ Cool Day Light 6500K & Warm White options available.
- ✦ Non dimmable.

FEATURES

- ✦ 60% energy savings than fluorescent tube light
- ✦ Lasts more than 4 times than FTL
- ✦ No additional ballast and starter required
- ✦ Environment friendly: Mercury free, No UV/IR Radiations
- ✦ Gives almost same light after 1 year
- ✦ Glare & Flicker Free
- ✦ Can Be used as Linear light

APPLICATIONS



Home



Industry



Hospital



Outlet

Hotel &
Restaurants

3D+ Slim Batten Tube Light

2 YEARS
WARRANTY

The warranty period may vary in case of any changes to the specifications

AVAILABLE COLORS



Cool Day Light



Warm White



Energy Saver



Eco Friendly



Best Quality



Cost Efficient

3D+ Slim Batten Tube Light

AVAILABLE SIZE

1 Ft. 2 Ft. 4 Ft.

Technical Specification

Watt	10W	20W	40W
Lumen	1000 lm	2000 lm	4000 lm
Model No	TR 10W 3D+SB	TR 20W 3D+SB	TR 40W 3D+SB
Shape	3D	3D	3D
Size	1 Ft.	2 Ft.	4 Ft.
Efficacy	≥100 lm/w		
Beam Angle	230°		
Operating Voltage	100-265V AC, 50/60Hz		
Power Factor	≥0.5		
Surge Protection	2.5KV		
Color Temperature	Cool Day Light 6500K & Warm White 2700K		
Color Rendering Index	≥80%		
Life Time	20,000 Hrs		
Lumen Maintenance	>90% (2000 Hrs)		

FEATURES

- ❖ 60% energy savings than fluorescent tube light
- ❖ Lasts more than 4 times than FTL
- ❖ No additional ballast and starter required
- ❖ Environment friendly: Mercury free, No UV/IR Radiations
- ❖ Gives almost same light after 1 year
- ❖ Glare & Flicker Free
- ❖ Can Be used as Linear light

APPLICATIONS



Home



Industry



Hospital



Outlet



Hotel & Restaurants

LED PANEL LIGHT



Energy Saver



Eco Friendly



Best Quality



Cost Efficient


CONCEAL

LED PANEL LIGHT

AVAILABLE SHAPE

SQUARE

ROUND


SURFACE

Technical Specification

CONCEAL

Watt	6W	9W	12W	15W	18W	24W
Lumen	440	675	900	1125	1350	1900
Model No	TR 6WR120	TR 9WR140	TR 12WR170	TR 15WR200	TR 18WR220	TR 24WR300
Shape	Round/Square					
Efficacy	≥75 lm/w					≥80 lm/w
Beam Angle	120°					
Operating Voltage	85-265V AC, 50/60Hz					
Power Factor	≥0.9					
Surge Protection	2.5KV					
Color Temperature	Cool Day Light 6500K & Warm White 2700K					
Color Rendering Index	≥80%					
Life Time	25,000 hrs					
Lumen Maintenance	≥90% (2000 hrs)					

SURFACE

6W	12W	18W	24W
640	900	1350	1900
TR 6WS120	TR 12WS170	TR 18WS220	TR 24WS3
Round/Square			
75 lm/w			80 lm/w
120°			
85-265V AC, 50/60Hz			
≥0.9			
2.5KV			
Cool Day Light 6500K & Warm White 2700K			
≥80%			
25,000 hrs			
≥90% (2000 hrs)			

FEATURES

- Easy to install
- Consistent CCT Output
- No flickering, UV/IR & Mercury free
- Lumen maintenance after 2000 Hours → 90%
- Slim & modern design
- Good CRI Level
- Surge voltage protection
- Tested 2000 Hours

APPLICATIONS



Office



Home



Industry



Hospital



Outlet


Hotel &
Restaurants

Commercial
Spaces


Showroom

The warranty period may vary
in case of any changes
to the specifications



Cool Day Light



Warm White

AVAILABLE COLORS


CONCEAL

SURFACE

LED BRIGHT PANEL LIGHT



The warranty period may vary
in case of any changes
to the specifications

AVAILABLE COLORS



Cool Day Light



Warm White



SURFACE



CONCEAL



Energy Saver



Eco Friendly



Best Quality



Cost Efficient

LED BRIGHT PANEL LIGHT (SURFACE)



LED BRIGHT PANEL LIGHT (CONCEAL)



AVAILABLE SHAPE

SQUARE

ROUND

Technical Specification

SURFACE

Watt	12W	18W	24W
Lumen	1080	1620	2160
Shape	Round/Square		
Efficacy	>85 lm/w	>90 lm/w	
Beam Angle	230°		
Operating Voltage	90-270V AC, 50/60Hz		
Surge Protection	2.5KV		
Color Temperature	Cool Day Light 6500K & Warm White 2700K		
Color Rendering Index	≥80%		
Life Time	20,000 Hrs		
Lumen Maintenance	>90% (2000 Hrs)		

CONCEAL

7W	12W	18W	24W
630	1080	1620	2160
Round/Square			
>85 lm/w		>90 lm/w	
230°			
90-270V AC, 50/60Hz			
2.5KV			
Cool Day Light 6500K & Warm White 2700K			
≥80%			
20,000 Hrs			
>90% (2000 Hrs)			

FEATURES

- Easy to install
- Consistent CCT Output
- No flickering, UV/IR & Mercury free
- Lumen maintenance after 2000 Hours → 90%
- Slim & modern design
- Good CRI Level
- Surge voltage protection
- Tested 2000 Hours

APPLICATIONS



Office



Home



Industry



Hospital



Outlet



Hotel &
Restaurants



Commercial Spaces

LED Down Light



The warranty period may vary in case of any changes to the specifications

AVAILABLE COLORS

- ☐ Cool Day Light
- ☐ Warm White
- ☐ Red
- ☐ Blue
- ☐ Green



Energy Saver



Eco Friendly



Best Quality



Cost Efficient



LED Down Light

AVAILABLE COLORS

- ☐ Cool Day Light
- ☐ Warm White
- ☐ Red
- ☐ Blue
- ☐ Green

Technical Specification

Watt	7W
Lumen	560 lm
Shape	Round
Efficacy	≥80 lm/w
Beam Angle	38°
Operating Voltage	90-270V AC, 50/60Hz
Surge Protection	2.5KV
Color Rendering Index	80%
Life Time	20,000 Hrs
Lumen Maintenance	>90% (2000 Hrs)

FEATURES

- ✔ Easy to install
- ✔ Consistent CCT Output
- ✔ No flickering, UV/IR & Mercury free
- ✔ Lumen maintenance after 2000 Hours 90%
- ✔ Slim & modern design
- ✔ Good CRI Level
- ✔ Surge voltage protection
- ✔ Tested 2000 Hours

APPLICATIONS



Office



Home



Industry



Hospital



Outlet



Hotel & Restaurants



Commercial Spaces

LED Spot Light



AVAILABLE COLORS

- ☐ Cool Day Light
- ☐ Warm White



The warranty period may vary in case of any changes to the specifications



Energy Saver



Eco Friendly



Best Quality



Cost Efficient

LED Spot Light

Technical Specification

Watt	7W
Lumen	700±10 lm
Shape	Round
Efficacy	≥100 lm/w
Beam Angle	38°
Operating Voltage	100-250V AC, 50/60Hz
Color Rendering Index	≥80%
Life Time	20,000 Hrs
Lumen Maintenance	>90% (2000 Hrs)

FEATURES

- ✔ Easy to install
- ✔ Consistent CCT Output
- ✔ No flickering, UV/IR & Mercury free
- ✔ Lumen maintenance after 2000 Hours 90%
- ✔ Slim & modern design
- ✔ Good CRI Level
- ✔ Surge voltage protection
- ✔ Tested 2000 Hours

APPLICATIONS



Office



Home



Industry



Hospital



Outlet



Hotel & Restaurants



Commercial Spaces

LED BRIGHT FLOOD LIGHT

IP66
WATER RESISTANT

2 YEARS
WARRANTY

The warranty period may vary
in case of any changes
to the specifications



Energy Saver



Eco Friendly



Best Quality



Cost Efficient

LED BRIGHT FLOOD LIGHT

Technical Specification

Watt	50W	100W
Lumen	5000	10000
Shape	Square	
Efficacy	≥100	
Beam Angle	120°	
Operating Voltage	90-270V AC, 50/60Hz	
Power Factor	≥0.5	
Surge Protection	2.5 KV	
Color Temperature	Day Light 6500K	
Color Rendering Index	≥80%	
Life Time	30,000 Hrs	
Lumen Maintenance	≥90% (2000 Hrs)	

FEATURES

- Creative design & in-depth technology in TRANSTEC brand flood light, not only make it. At the top level in Bangladesh market but also make the light to be an art work.
- In combination with the environment, it plays a role which is greater than lights.
- High intensity Die-Cast body, better heat dissipation structural material.
- High intensity Tempered glass can resist impact & friction, ensure 95% light refraction.
- Used stainless steel (SS 304) Nuts & Screws which ensure better performance in severe environment
- Painted body after surface treatment process can pass salt spray test of 500 hrs. It ensures better performance in anti-corrosion.

APPLICATIONS



Factory Security
Lighting



Rail Station



Toll Plaza



Gas Station



Tennis Court



Car Parking
Area

GSS PEARL SERIES



Switching Lifetime
40,000+

Plugin Lifetime
10,000+

Rotation Lifetime
10,000+

FEATURES

- Premium look & glossy finish / elegant design.
- Made of Polycarbonate virgin resin.
- Flame retardant.
- Silver cadmium oxide contacts provide high conductivity and anti-weld properties.
- Metals are made of high conductive Copper alloys.
- Safety shutter prevents any accidental shock.
- Shock proof.
- Easy installation & user convenient.



One Gang One Way
Model No: PL-01
Current: 16A
Voltage: 250V



One Gang Two Way
Model No: PL-02
Current: 16A
Voltage: 250V



Two Gang One Way
Model No: PL-03
Current: 16A
Voltage: 250V



Two Gang Two Way
Model No: PL-04
Current: 16A
Voltage: 250V



Three Gang One Way
Model No: PL-05
Current: 16A
Voltage: 250V



Four Gang One Way
Model No: PL-06
Current: 16A
Voltage: 250V



Bell Push
Model No: PL-07
Current: 16A
Voltage: 250V



Fan Dimmer
Model No: PL-08
Power: 500W
Voltage: 250V



DP Switch
Model No: PL-09
Current: 32A
Voltage: 250V



TV Socket
Model No: PL-10
Connector: F-Type



Telephone Socket
Model No: PL-11
Socket: CAT3



Internet Socket
Model No: PL-12
Socket: CAT5E



2 Pin Socket
Model No: PL-13
Current: 10A
Voltage: 250V



Universal Socket
Model No: PL-14
Current: 13A
Voltage: 250V



3 Pin Round Socket
Model No: PL-15
Current: 15A
Voltage: 250V



**10 Pin Multi
Function Socket**
Model No: PL-16
Current: 13A
Voltage: 250V



**5 Pin Multi
Function Socket**
Model No: PL-17
Current: 13A
Voltage: 250V



**8 Pin Multi
Function Socket**
Model No: PL-18
Current: 16A
Voltage: 250V



**5 Pin Multi Function
Socket with USB**
Model No: PL-19
Current: 13A
Voltage: 250V

GSS WHITE GOLD SERIES



Switching Lifetime
40,000+

Plug-in Lifetime
10,000+

Rotation Lifetime
10,000+

FEATURES

- Premium look & glossy finish / elegant design.
- Made of Polycarbonate virgin resin.
- Flame retardant.
- Silver cadmium oxide contacts provide high conductivity and anti-weld properties.
- Metals are made of high conductive Copper alloys.
- Safety shutter prevents any accidental shock.
- Metal back frame.
- Shock proof.
- Easy installation & user convenient.



One Gang One Way
Model No: WG-01
Current: 16A
Voltage: 250V



One Gang Two Way
Model No: WG-02
Current: 16A
Voltage: 250V



Two Gang One Way
Model No: WG-03
Current: 16A
Voltage: 250V



Two Gang Two Way
Model No: WG-04
Current: 16A
Voltage: 250V



Three Gang One Way
Model No: WG-05
Current: 16A
Voltage: 250V



Four Gang One Way
Model No: WG-06
Current: 16A
Voltage: 250V



Bell Push
Model No: WG-07
Current: 10A
Voltage: 250V



Fan Dimmer
Model No: WG-08
Power: 500W
Voltage: 250V



DP Switch
Model No: WG-09
Current: 45A
Voltage: 250V



TV Socket
Model No: WG-10
Connector: F-Type



Telephone Socket
Model No: WG-11
Socket: CAT3



Internet Socket
Model No: WG-12
Socket: CAT5E



2 Pin Socket
Model No: WG-13
Current: 10A
Voltage: 250V



Universal Socket
Model No: WG-14
Current: 13A
Voltage: 250V



3 Pin Round Socket
Model No: WG-15
Current: 15A
Voltage: 250V



5 Pin Multi Function Socket with USB
Model No: WG-16
Current: 13A
Voltage: 250V



5 Pin Multi Function Socket
Model No: WG-17
Current: 13A
Voltage: 250V

GSS GOLD SERIES


 Switching Lifetime
40,000+

 Plug-in Lifetime
10,000+

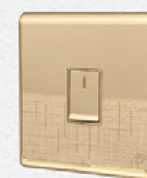
 Rotation Lifetime
10,000+

FEATURES

- Premium look & glossy finish / elegant design.
- Made of Polycarbonate virgin resin.
- Flame retardant.
- Silver cadmium oxide contacts provide high conductivity and anti-weld properties.
- Metals are made of high conductive Copper alloys.
- Safety shutter prevents any accidental shock.
- Metal back frame.
- Shock proof.
- Easy installation & user convenient.



One Gang One Way
 Model No: GL-01
 Current: 16A
 Voltage: 250V



One Gang Two Way
 Model No: GL-02
 Current: 16A
 Voltage: 250V



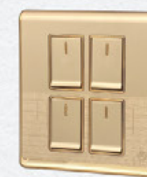
Two Gang One Way
 Model No: GL-03
 Current: 16A
 Voltage: 250V



Two Gang Two Way
 Model No: GL-04
 Current: 16A
 Voltage: 250V



Three Gang One Way
 Model No: GL-05
 Current: 16A
 Voltage: 250V



Four Gang One Way
 Model No: GL-06
 Current: 16A
 Voltage: 250V



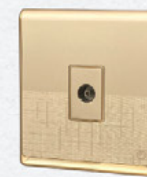
Bell Push
 Model No: GL-07
 Current: 10A
 Voltage: 250V



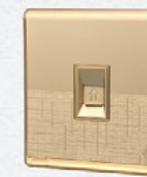
Fan Dimmer
 Model No: GL-08
 Power: 500W
 Voltage: 250V



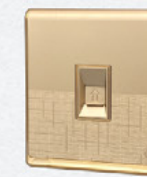
DP Switch
 Model No: GL-09
 Current: 32A
 Voltage: 250V



TV Socket
 Model No: GL-10
 Connector: F-Type



Telephone Socket
 Model No: GL-11
 Socket: CAT3



Internet Socket
 Model No: GL-12
 Socket: CAT5E



2 Pin Socket
 Model No: GL-13
 Current: 13A
 Voltage: 250V



Universal Socket
 Model No: GL-14
 Current: 13A
 Voltage: 250V



3 Pin Round Socket
 Model No: GL-15
 Current: 15A
 Voltage: 250V



5 Pin Multi Function Socket with USB
 Model No: GL-16
 Current: 13A
 Voltage: 250V



5 Pin Multi Function Socket
 Model No: GL-17
 Current: 13A
 Voltage: 250V

GSS OSLO SERIES


 Switching Lifetime
40,000+

 Plugin Lifetime
10,000+

 Rotation Lifetime
10,000+

FEATURES

- Premium look & glossy finish / elegant design.
- Made of Polycarbonate virgin resin.
- Flame retardant.
- Silver cadmium oxide contacts provide high conductivity and anti-weld properties.
- Metals are made of high conductive Copper alloys.
- Safety shutter prevents any accidental shock.
- Metal back frame.
- Shock proof.
- Easy installation & user convenient.



One Gang One Way
 Model No: OS-01
 Current: 16A
 Voltage: 250V



One Gang Two Way
 Model No: OS-02
 Current: 16A
 Voltage: 250V



Two Gang One Way
 Model No: OS-03
 Current: 16A
 Voltage: 250V



Two Gang Two Way
 Model No: OS-04
 Current: 16A
 Voltage: 250V



Three Gang One Way
 Model No: OS-05
 Current: 16A
 Voltage: 250V



Four Gang One Way
 Model No: OS-06
 Current: 16A
 Voltage: 250V



Bell Push
 Model No: OS-07
 Current: 16A
 Voltage: 250V



Fan Dimmer
 Model No: OS-08
 Power: 500W
 Voltage: 250V



DP Switch
 Model No: OS-09
 Current: 32A
 Voltage: 250V



TV Socket
 Model No: OS-10
 Connector: F-Type



Telephone Socket
 Model No: OS-11
 Socket: CAT3



Internet Socket
 Model No: OS-12
 Socket: CAT5E



2 Pin Socket
 Model No: OS-13
 Current: 16A
 Voltage: 250V



Universal Socket
 Model No: OS-14
 Current: 13A
 Voltage: 250V



3 Pin Round Socket
 Model No: OS-15
 Current: 15A
 Voltage: 250V



5 Pin Multi Function Socket with USB
 Model No: OS-16
 Current: 13A
 Voltage: 250V



5 Pin Multi Function Socket
 Model No: OS-17
 Current: 13A
 Voltage: 250V



10 Pin Multi Function Socket
 Model No: OS-18
 Current: 13A
 Voltage: 250V

GSS Vanilla Series



Switching Lifetime
40,000+

Plugin Lifetime
10,000+

Rotation Lifetime
10,000+

FEATURES

- Premium look & glossy finish / elegant design.
- Made of Polycarbonate virgin resin.
- Flame retardant.
- Silver cadmium oxide contacts provide high conductivity and anti-weld properties.
- Metals are made of high conductive Copper alloys.
- Safety shutter prevents any accidental shock.
- Shock proof.
- Easy installation & user convenient.



One Gang One Way
Model No: VS - 01
Current: 10A
Voltage: 250V



One Gang Two Way
Model No: VS - 02
Current: 10A
Voltage: 250V



Two Gang One Way
Model No: VS - 03
Current: 10A
Voltage: 250V



Two Gang Two Way
Model No: VS - 04
Current: 10A
Voltage: 250V



Three Gang One Way
Model No: VS - 05
Current: 10A
Voltage: 250V



Four Gang One Way
Model No: VS - 06
Current: 10A
Voltage: 250V



Bell Push
Model No: VS - 07
Current: 10A
Voltage: 250V



Fan Dimmer
Model No: VS - 08
Power: 500W
Voltage: 250V



DP Switch
Model No: VS - 09
Current: 32A
Voltage: 250V



TV Socket
Model No: VS - 10
Connector: F-Type



Telephone Socket
Model No: VS - 11
Connector: CAT3



Internet Socket
Model No: VS - 12
Socket: CAT6



2 Pin socket
Model No: VS - 13
Current: 10A
Voltage: 250V



3 Pin Universal
Model No: VS - 14
Current: 13A
Voltage: 250V



3 Pin Round socket
Model No: VS - 15
Current: 15A
Voltage: 250V



**5 Pin Multi Function
Socket with USB**
Model No: VS - 16
Current: 13A
Voltage: 250V



5 Pin Multi Function
Model No: VS - 17
Current: 13A
Voltage: 250V



10 Pin Multi Function
Model No: VS - 18
Current: 13A
Voltage: 250V



Blank Plate
Model No: VS - 19

GSS Falcon Series



Switching Lifetime
40,000+

Plugin Lifetime
10,000+

Rotation Lifetime
10,000+

FEATURES

- Premium look & glossy finish / elegant design.
- Made of Polycarbonate virgin resin.
- Flame retardant.
- Silver cadmium oxide contacts provide high conductivity and anti-weld properties.
- Metals are made of high conductive Copper alloys.
- Safety shutter prevents any accidental shock.
- Shock proof.
- Easy installation & user convenient.



One Gang One Way
Model No: FS - 01
Current: 16A
Voltage: 250V



One Gang Two Way
Model No: FS - 02
Current: 16A
Voltage: 250V



Two Gang One Way
Model No: FS - 03
Current: 16A
Voltage: 250V



Two Gang Two Way
Model No: FS - 04
Current: 16A
Voltage: 250V



Three Gang One Way
Model No: FS - 05
Current: 16A
Voltage: 250V



Four Gang One Way
Model No: FS - 06
Current: 16A
Voltage: 250V



Bell Push
Model No: FS - 07
Current: 16A
Voltage: 250V



Fan Dimmer
Model No: FS - 08
Power: 500W
Voltage: 250V



DP Switch
Model No: FS - 09
Current: 32A
Voltage: 250V



TV Socket
Model No: FS - 10
Connector: F-Type



Telephone Socket
Model No: FS - 11
Connector: CAT3



Internet Socket
Model No: FS - 12
Socket: CAT6



2 Pin socket
Model No: FS - 13
Current: 10A
Voltage: 250V



3 Pin Universal
Model No: FS - 14
Current: 13A
Voltage: 250V



3 Pin Round socket
Model No: FS - 15
Current: 15A
Voltage: 250V



**5 Pin Multi Function
Socket with USB**
Model No: FS - 16
Current: 13A
Voltage: 250V



5 Pin Multi Function
Model No: FS - 17
Current: 13A
Voltage: 250V



10 Pin Multi Function
Model No: FS - 18
Current: 13A
Voltage: 250V



Blank Plate
Model No: FS - 19

GSS Cosmo Series



Switching Lifetime
40,000+

Plugin Lifetime
10,000+

Rotation Lifetime
10,000+

FEATURES

- Premium look & glossy finish / elegant design.
- Made of Polycarbonate virgin resin.
- Flame retardant.
- Silver cadmium oxide contacts provide high conductivity and anti-weld properties.
- Metals are made of high conductive Copper alloys.
- Safety shutter prevents any accidental shock.
- Shock proof.
- Easy installation & user convenient.



One Gang One Way
Model No: CS - 01
Current: 16A
Voltage: 250V



One Gang Two Way
Model No: CS - 02
Current: 16A
Voltage: 250V



Two Gang One Way
Model No: CS - 03
Current: 16A
Voltage: 250V



Two Gang Two Way
Model No: CS - 04
Current: 16A
Voltage: 250V



Three Gang One Way
Model No: CS - 05
Current: 16A
Voltage: 250V



Four Gang One Way
Model No: CS - 06
Current: 16A
Voltage: 250V



Bell Push
Model No: CS - 07
Current: 16A
Voltage: 250V



Fan Dimmer
Model No: CS - 08
Power: 500W
Voltage: 250V



DP Switch
Model No: CS - 09
Current: 20A
Voltage: 250V



DP Switch
Model No: CS - 10
Current: 45A
Voltage: 250V



TV Socket
Model No: CS - 11
Connector : F-Type



Telephone Socket
Model No: CS - 12
Connector : CAT3



Internet Socket
Model No: CS - 13
Socket: CAT6



Two Gang Switch Two Socket
Model No: CS - 14
Current: 16A & 10A
Voltage: 250V



Three Gang Switch One Socket
Model No: CS - 15
Current: 16A & 10A
Voltage: 250V



2 Pin socket
Model No: CS - 16
Current: 10A
Voltage: 250V



3 Pin Universal Socket
Model No: CS - 17
Current: 13A
Voltage: 250V



3 Pin Round socket
Model No: CS - 18
Current: A
Voltage: 250V



5 Pin Multi Function Socket with USB
Model No: CS - 19
Current: 13A
Voltage: 250V



5 Pin Multi Function
Model No: CS - 20
Current: 13A
Voltage: 250V



10 Pin Multi Function
Model No: CS - 21
Current: 13A
Voltage: 250V



Blank Plate
Model No: CS - 22

PIANO SERIES SWITCH & SOCKET



PIANO SERIES

SHINE PIANO SERIES



PIANO SERIES

• Current: 6A • Voltage: 250V



One Way Switch
Model No: PS - 01

Fan Dimmer
Model No: PS - 03
Power: 200W

Fuse
Model No: PS - 04



Indicator
Model No: PS - 05

Bell Push
Model No: PS - 06

2 Pin Socket
Model No: PS - 07



SHINE PIANO SERIES

• Current: 6A • Voltage: 250V



One Way Switch
Model No: SP - 01

Fan Dimmer
Model No: SP - 03
Power: 200W

Fuse
Model No: SP - 04



Indicator
Model No: SP - 05

Bell Push
Model No: SP - 06

2 Pin Socket
Model No: SP - 07

FEATURES

- Made of polycarbonate Virgin Resin.
- Flame retardant.
- Wide switch knob for easy operation.
- Silver cadmium oxide contacts provide high conductivity and anti-weld properties.
- Metals are made of high conductive copper alloys.
- Radium indicator.
- Easy installation & user convenient.

MCB



MCB

Available Products



Single Pole

Breaking Capacity (In): 3kA
 Current Rating (Ics): 6A, 10A, 16A, 20A,
 32A, 40A, 63A



Double Pole

Breaking Capacity (In): 3kA
 Current Rating (Ics): 16A, 20A, 32A, 40A, 63A



Triple Pole

Breaking Capacity (In): 3kA
 Current Rating (Ics): 32A, 40A, 63A

FEATURES

- Ensure protection against short circuit
- Ensure protection against over current
- Precise trip response
- Compatibility with different circuits
- Compact & easy to install

PC OTHERS



PC OTHERS

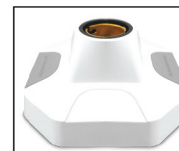
- Holder Current: 6A
- Plug: 2pin-6A, 3pin-13A & 16A
- Holder & Plug Voltage: 250V

Available Products



Hexagon Holder

- B22
- E27
- Ceiling Rose



Octagon Holder

- B22
- E27
- Ceiling Rose



Round Batten Holder

- B22
- E27



Pendant Holder

- B22
- E27



3 Pin Plug

Current: 13A
Voltage: 250V



3 Pin Plug

Current: 16A
Voltage: 250V



2 Pin Plug

Current: 6A
Voltage: 250V



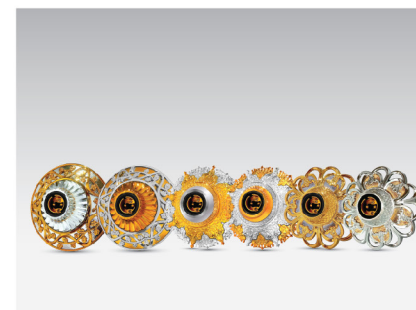
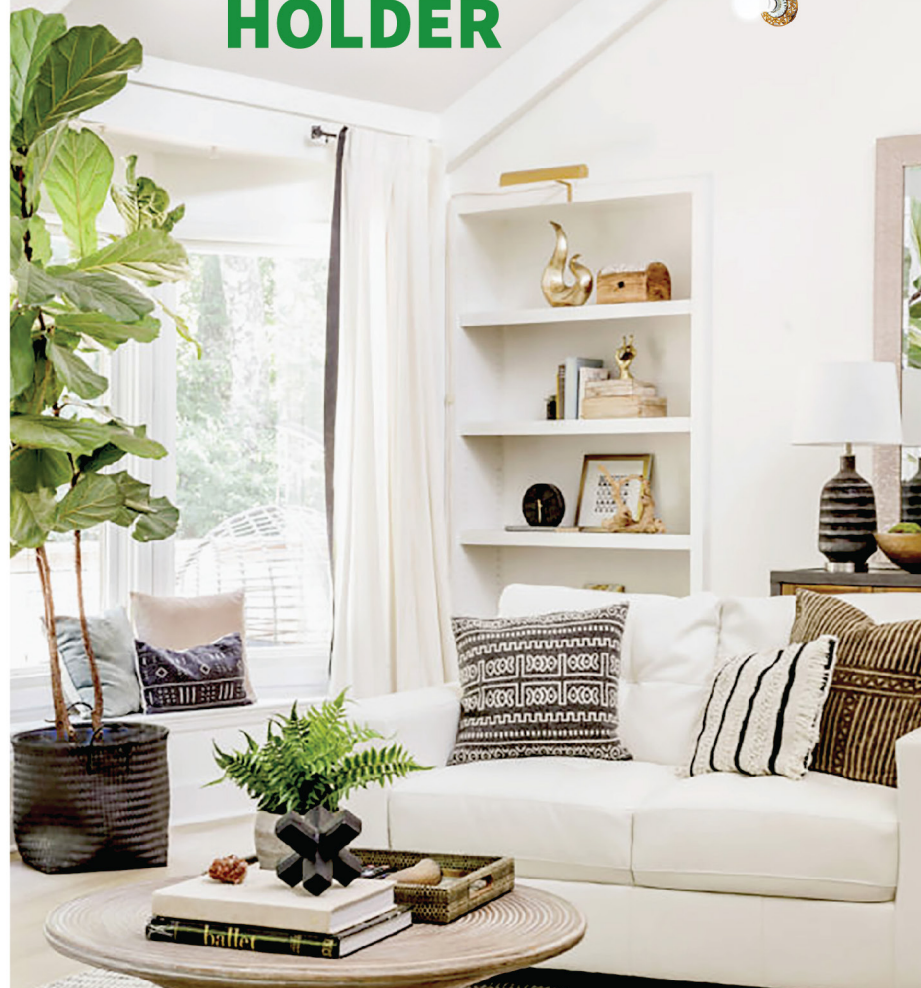
Smart 8 Pin Socket

Current: 16A
Voltage: 250V

FEATURES

- Made with High Quality Virgin Resin Materials
- Elegant Design & Durable
- Premium Quality
- Fire Retardant
- Easy Installation
- Anti-Rust Coated Metals that Ensure High Resistance of Rust

DECORATIVE HOLDER

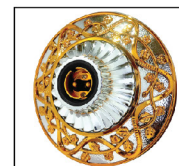


DECORATIVE HOLDER

- Current: 6A
- Voltage: 250V

Available Products

Coral



Coral Gold Decorative Holder

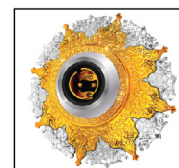
- B22
- E27
- Ceiling Rose



Coral Silver Decorative Holder

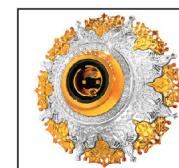
- B22
- E27
- Ceiling Rose

Star



Star Gold Decorative Holder

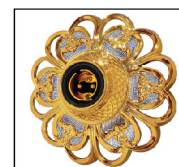
- B22
- E27
- Ceiling Rose



Star Silver Decorative Holder

- B22
- E27
- Ceiling Rose

Lotus



Lotus Gold Decorative Holder

- B22
- E27
- Ceiling Rose



Lotus Silver Decorative Holder

- B22
- E27
- Ceiling Rose

FEATURES

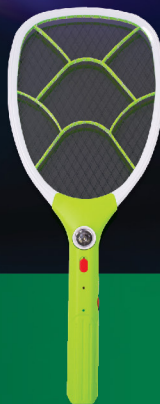
- Made with High Quality Virgin Resin Materials
- Elegant Design & Durable
- Premium Quality
- Fire Retardant
- Easy Installation
- Anti-Rust Coated Metals that Ensure High Resistance of Rust



Model: TR-638
USB C Type
Charging



MOSQUITO BAT
(TR-638)



MOSQUITO BAT
(TR-306D)

MOSQUITO BAT



Model: TR-638

AVAILABLE COLORS



Model: TR-306D

AVAILABLE COLORS



Technical Specification

Rated charging voltage	5V DC
Rated output voltage	3000V DC
Battery capacity	400mAh
Charging time	3-5 hours

Technical Specification

Rated charging voltage	110-220V AC
Rated output voltage	3000V DC
Battery capacity	400mAh
Charging time	6-8 hours

FEATURES

- Mosquito killing bat & trap.
- Triple-layered mesh for safety.
- Electric shock & leakage current proof.
- USB C type charging & rechargeable battery.
- LED indicator for charging & working mode.
- Light weight & easy to use.

FEATURES

- Triple-layered mesh for safety.
- Electric shock & leakage current proof.
- AC cord type charging & rechargeable battery.
- LED indicator for charging & working mode.
- Lightweight & easy to use.

DIRECTIONS TO USE

- Must be charged for 6-8 hours before using for the first time.
- To use as a mosquito bat. Slide the side button to "ON 1" position & then press the big grey touch switch on the front.
- To use as a mosquito trap. Slide the side button to "ON 2" position, the UV purple light will be on to work as a trap.
- To charge, slide the side button to "OFF" position & insert USB charger, a LED indicator will light up to indicate charging.
- To clean the dead mosquito stuck in between the nets just tap/shake the mosquito bat few times or use a long hair brush to clean it.
- Do not wipe the mosquito bat with a wet cloth or wash it with water, to avoid any dangerous consequences.

DIRECTIONS TO USE

- Must be charged for 6-8 hours before using for the first time.
- To use as a mosquito bat, slide the side button to "ON" position & then press the push button.
- To charge, slide the side button to "OFF" position & insert USB charger, a LED indicator will light up to indicate charging.
- To clean the dead mosquito stuck in between the nets just tap/shake the mosquito bat few times or use a long hair brush to clean it.
- Slide the middle button to the "ON" position to light up the LED light and slide it to "OFF" position to turn off the LED light.
- Do not wipe the mosquito bat with a wet cloth or wash it with water, to avoid any dangerous consequences.



Intelligently
Traps Mosquitoes



400mAh Battery



Torch Model



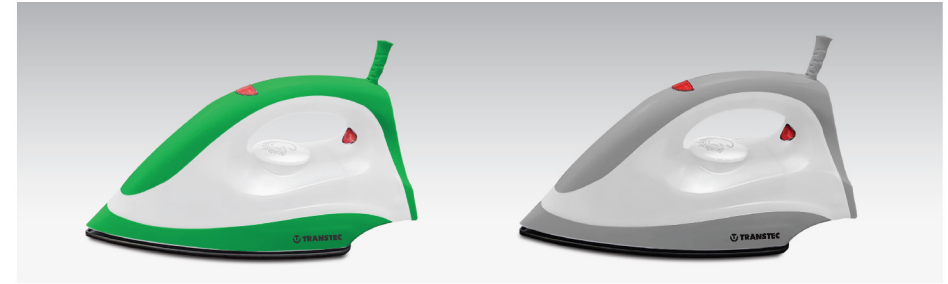
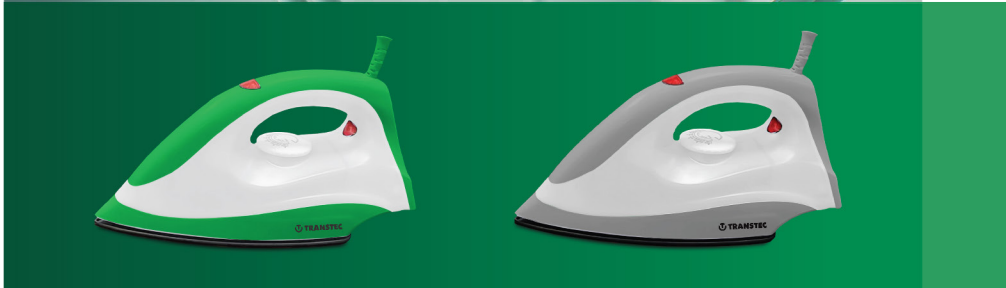
Powerful Quality



Charging Cable

ELECTRIC DRY IRON

Model: T-607D



ELECTRIC DRY IRON

AVAILABLE COLORS

 Green

 Grey



ELECTRIC DRY IRON

Power: 1200W
Color : Green
Voltage: 220V



ELECTRIC DRY IRON

Power: 1200W
Color : Grey
Voltage: 220V

FEATURES

- Teflon coated Sole-plate
- 1200W, 220V, 50 Hz
- Adjustable Temperature Control Dial
- Thermostat Temperature Control
- Flexible 360° Swivel Cord Guard
- Over Heat Protection
- Auto Power Off Function
- Pilot Light Indicator